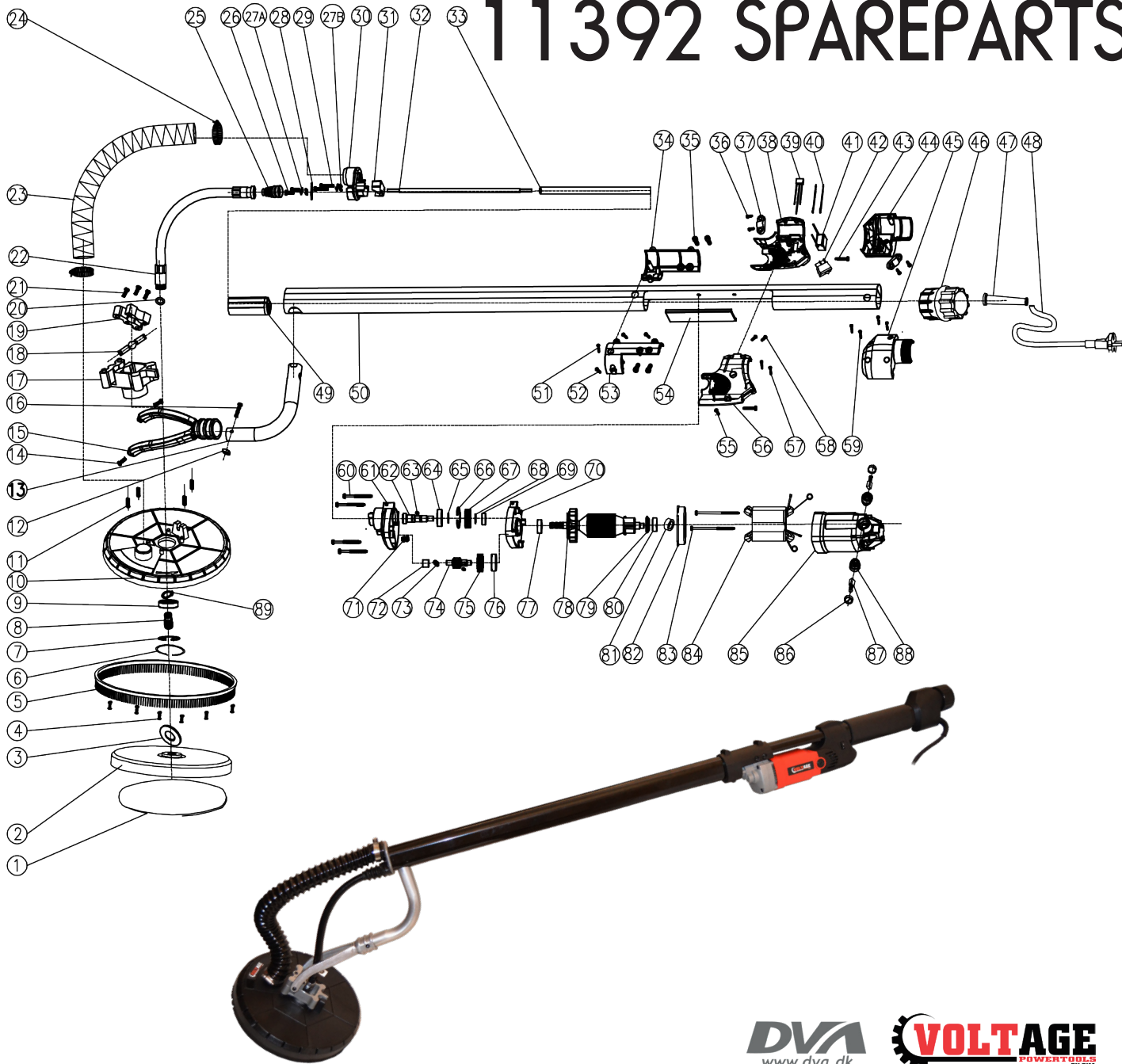


11392 SPAREPARTS



No.	Spare part	Art. no.	No.	Spare part	Art. no.
1	sanding paper set		45	vacuum adapter hlg	
2	sanding pad	11477	46	plastic screw	27140
3	wool mat		47	cable guard	
4	screw ST4X12		48	cable (plug)	
5	nylon bush/slat		49	protect block	
6	clip Ø36		50	main tube	
7	clip-external Ø28		51	cross-flat screw ST4X20	
8	spindle		52	cross-flat screw ST4X16	
9	ball bearing 6001 2RS		53	left for clip	
10	plastic guard disc	17714	54	tube protect cover	
11	spring		55	cross-flat screw ST4X18	
12	wall lock screw M5		56	left motor housing	
13	support tube	17721	57	cross-flat screw ST4X25	
14	screw M5x14	17738	58	cross-flat screw ST4X16	
15	support arm		59	cross-flat screw ST4X20	
16	screw M5x30		60	cross-flat screw ST4X45	
17	bearing seat		61	gear box	
18	ball shot		62	spindle	
19	bonnet ball		63	parallel key 4X4X6	
20	O-ring		64	ball-bearing 6001 2RS	
21	screw M4x20		65	clip-internal Ø12	
22	coating	17745	66	clip-external Ø28	
23	hoop	17752	67	big gear M1X32T	
24	hoop clamp		68	clip-internal Ø10	
25	tube sheath		69	ball bearing 60RZZ	
26	screw M4x12	17769	70	gear plate	
27A	spring pad		71	grease holder	
27B	lock washer		72	needle bearing HK0810C(Ø8X12X10)	
28	pivot plate		73	flat washer Ø8X1	
29	screw M4x45		74	intermediate spindle M1X11T	
30	tube support hlg		75	input gear M0.8X35T	
31	tube clamp plate		76	ball bearing 60RZZ	
32	drive shaft	11491	77	ball bearing 6000 2RS	
33	guide tube		78	rotator	
34	right fore clip		79	sealing ring	
35	hex screw M5x12		80	ball bearing 607 2RS	
36	cross-flat screw ST4X12		81	bearing cover Ø607 Ø22.1XØ19W	
37	cable clip		82	sealing ring	
38	right motor housing		83	cross-flat screw ST4X50	
39	capacitor		84	stator	
40	inductance		85	motor housing	
41	variable speed control	17707	86	carbon brush cover	
42	switch		87	carbon brush	
43	cross-flat screw ST4X20		88	carbon brush holder	
44	vacuum adapter hlg		89	clip-internal Ø12	